



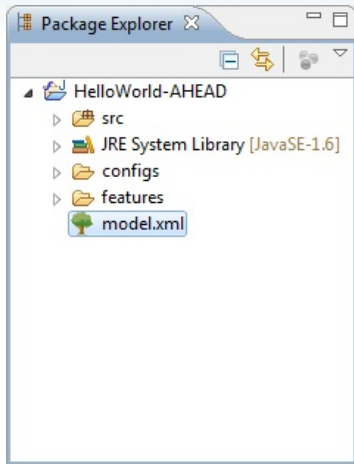
FAKULTÄT FÜR
INFORMATIK

FeatureIDE: Overview

Thomas Thüm, Jens Meinicke

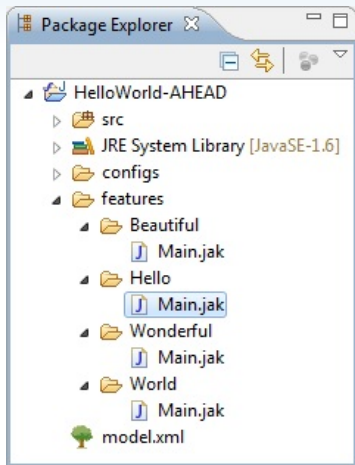
October 23, 2015

FeatureIDE Project Structure



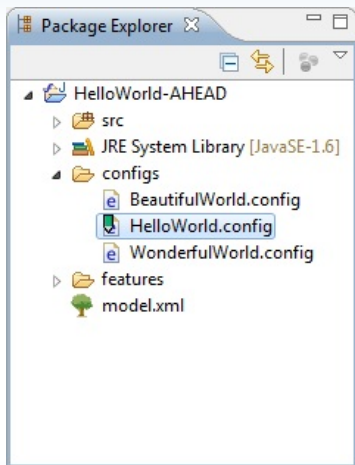
- ▶ Feature model file in a supported format (default: xml)

FeatureIDE Project Structure



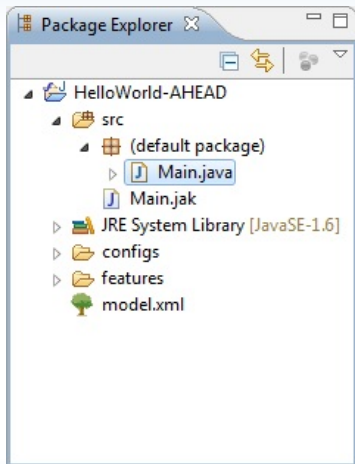
- ▶ Feature model file in a supported format (default: xml)
- ▶ Source folder containing a folder for every feature including files to compose

FeatureIDE Project Structure



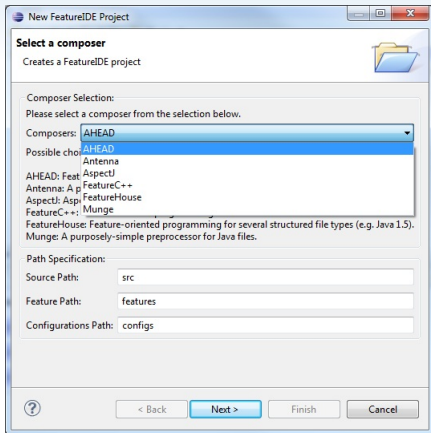
- ▶ Feature model file in a supported format (default: xml)
- ▶ Source folder containing a folder for every feature including files to compose
- ▶ Configurations containing selected features from the feature model

FeatureIDE Project Structure



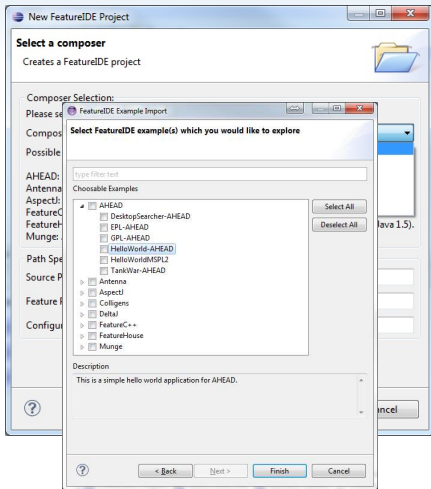
- ▶ Feature model file in a supported format (default: xml)
- ▶ Source folder containing a folder for every feature including files to compose
- ▶ Configurations containing selected features from the feature model
- ▶ Composed source files for the actual configurations (might be helpful when debugging)

Creation Wizards



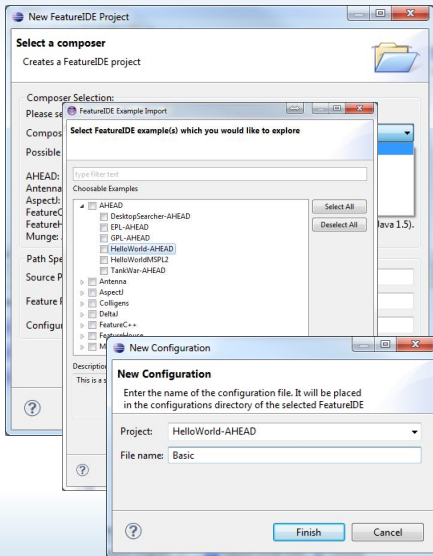
- FeatureIDE project wizard: creates basic feature model and project structure, also can add the FeatureIDE Nature to a project at your workspace

Creation Wizards



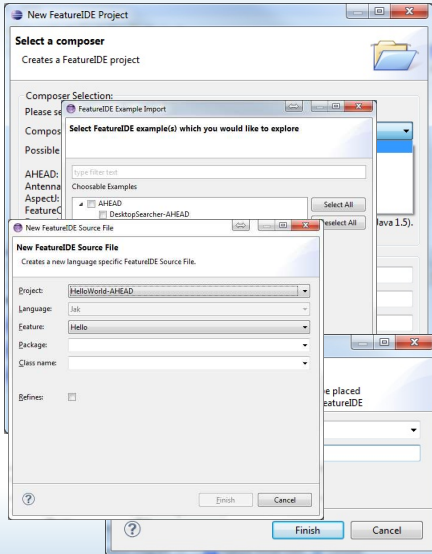
- ▶ FeatureIDE project wizard: creates basic feature model and project structure, also can add the FeatureIDE Nature to a project at your workspace
- ▶ Example project wizard

Creation Wizards



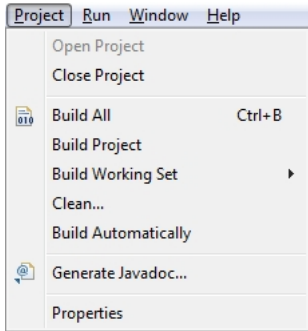
- ▶ FeatureIDE project wizard: creates basic feature model and project structure, also can add the FeatureIDE Nature to a project at your workspace
- ▶ Example project wizard
- ▶ Configuration file wizard

Creation Wizards



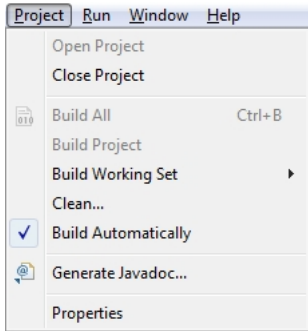
- ▶ FeatureIDE project wizard: creates basic feature model and project structure, also can add the FeatureIDE Nature to a project at your workspace
- ▶ Example project wizard
- ▶ Configuration file wizard
- ▶ FeatureIDE source file wizard

FeatureIDE Project Builder



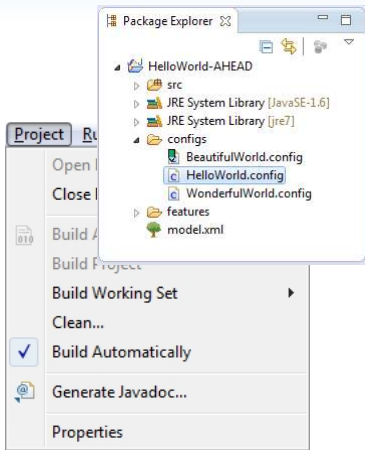
- ▶ Specific to composition engine
- ▶ Build: compose features contained in current configuration
- ▶ Clean: removing all resources in bin/build folder
- ▶ Build automatically: based on changes in source folder or current configuration

FeatureIDE Project Builder



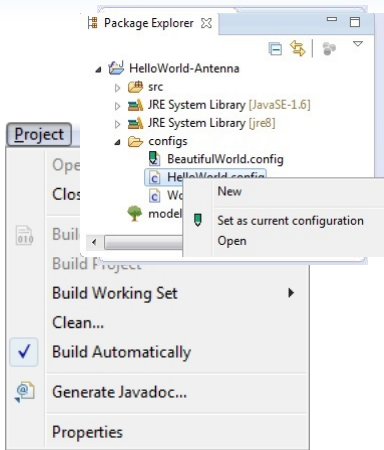
- ▶ Specific to composition engine
- ▶ Build: compose features contained in current configuration
- ▶ Clean: removing all resources in bin/build folder
- ▶ Build automatically: based on changes in source folder or current configuration

FeatureIDE Project Builder



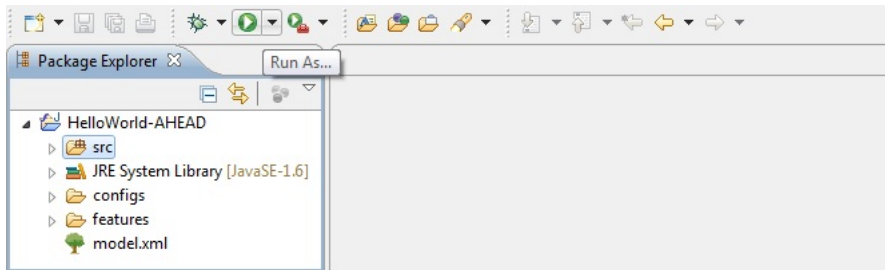
- ▶ Specific to composition engine
- ▶ Build: compose features contained in current configuration
- ▶ Clean: removing all resources in bin/build folder
- ▶ Build automatically: based on changes in source folder or current configuration

FeatureIDE Project Builder



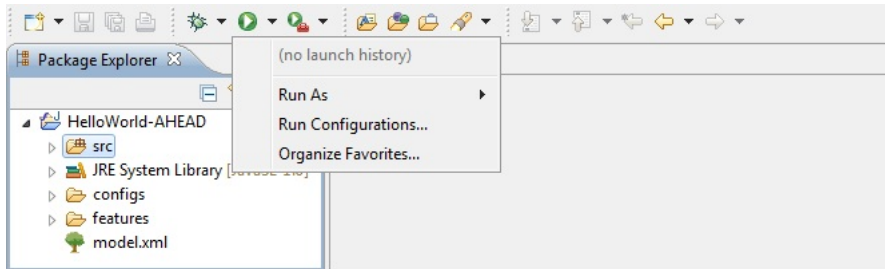
- ▶ Specific to composition engine
- ▶ Build: compose features contained in current configuration
- ▶ Clean: removing all resources in bin/build folder
- ▶ Build automatically: based on changes in source folder or current configuration

Run Configurations



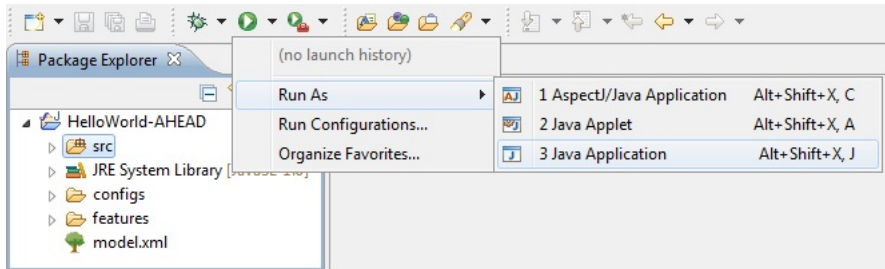
- ▶ The project has other natures (e.g. Java nature) next to the FeatureIDE nature, so you can run your application in the common way

Run Configurations



- ▶ The project has other natures (e.g. Java nature) next to the FeatureIDE nature, so you can run your application in the common way

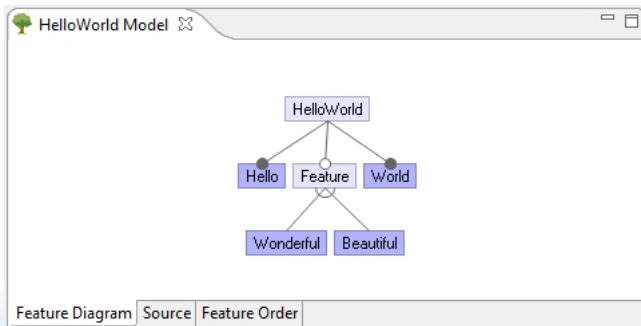
Run Configurations



- ▶ The project has other natures (e.g. Java nature) next to the FeatureIDE nature, so you can run your application in the common way

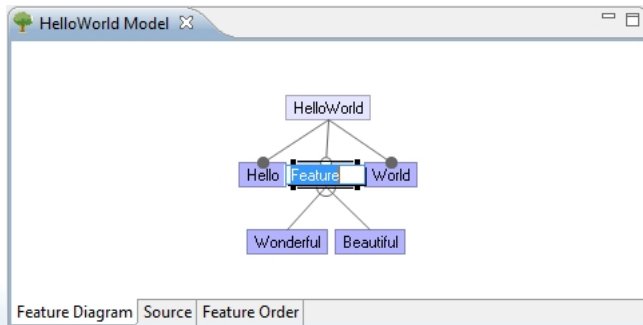
Feature Model Editor - Feature Diagram

- ▶ Double click to change connections and mandatory property



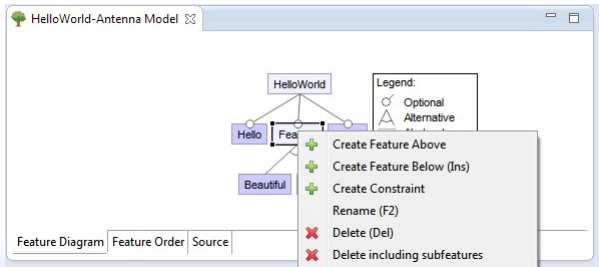
Feature Model Editor - Feature Diagram

- ▶ Double click to change connections and mandatory property
- ▶ Single click to rename features



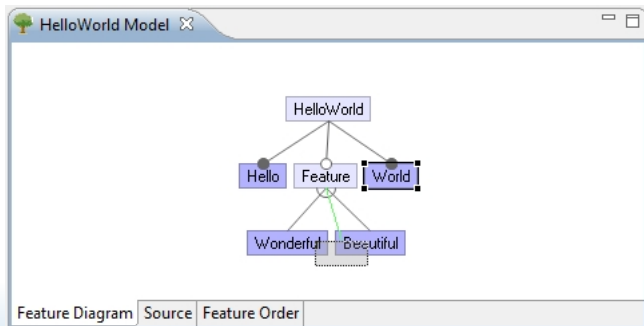
Feature Model Editor - Feature Diagram

- ▶ Double click to change connections and mandatory property
- ▶ Single click to rename features
- ▶ Right click to open context menu for features/connections



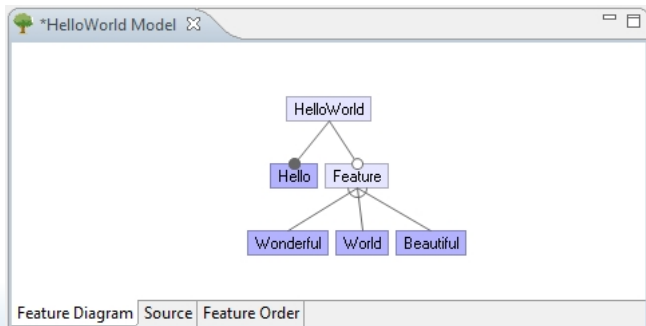
Feature Model Editor - Feature Diagram

- ▶ Double click to change connections and mandatory property
- ▶ Single click to rename features
- ▶ Right click to open context menu for features/connections
- ▶ Drag



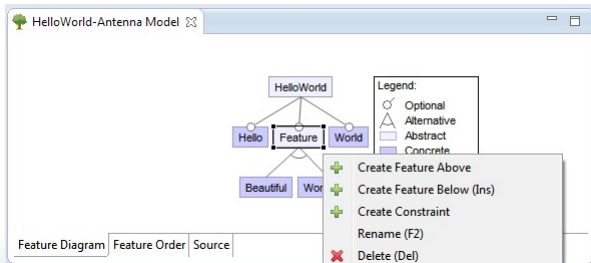
Feature Model Editor - Feature Diagram

- ▶ Double click to change connections and mandatory property
- ▶ Single click to rename features
- ▶ Right click to open context menu for features/connections
- ▶ Drag and drop features



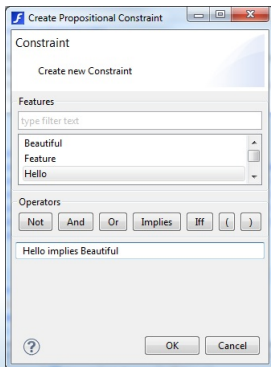
Feature Model Editor - Feature Diagram

- ▶ Double click to change connections and mandatory property
- ▶ Single click to rename features
- ▶ Right click to open context menu for features/connections
- ▶ Drag and drop features
- ▶ Context menu



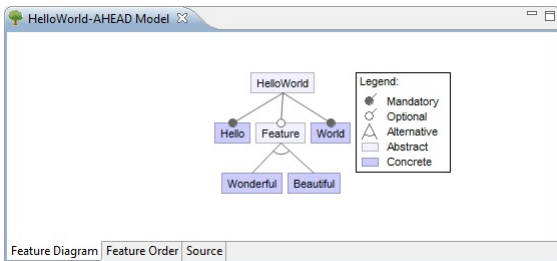
Feature Model Editor - Feature Diagram

- ▶ Double click to change connections and mandatory property
- ▶ Single click to rename features
- ▶ Right click to open context menu for features/connections
- ▶ Drag and drop features
- ▶ Context menu to open Constraint Editor



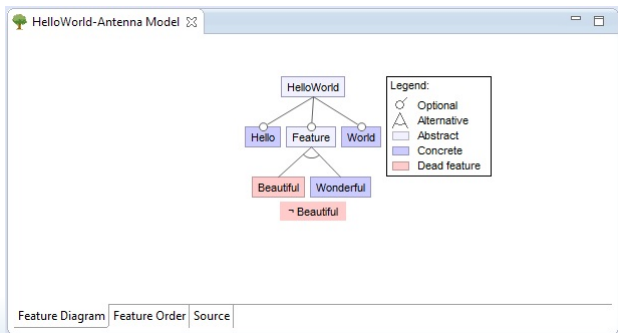
Feature Model Editor - Feature Diagram

- ▶ Legend for the feature model elements and colors



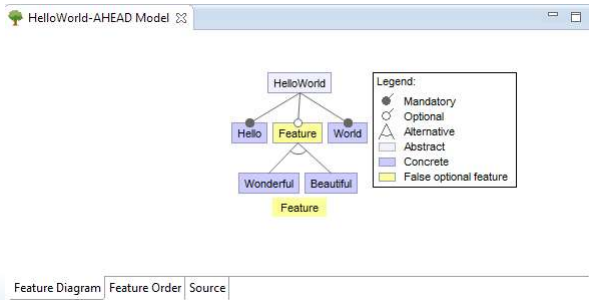
Feature Model Editor - Feature Diagram

- ▶ Legend for the feature model elements and colors
- ▶ Highlighting dead features



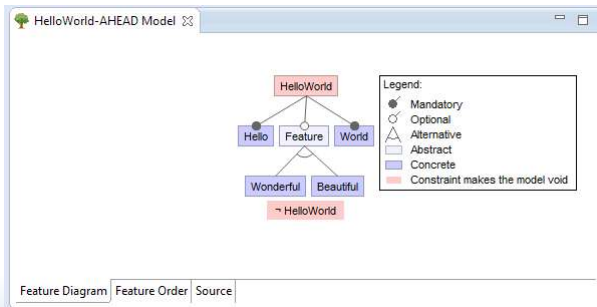
Feature Model Editor - Feature Diagram

- ▶ Legend for the feature model elements and colors
- ▶ Highlighting dead features
- ▶ Highlighting false optional features



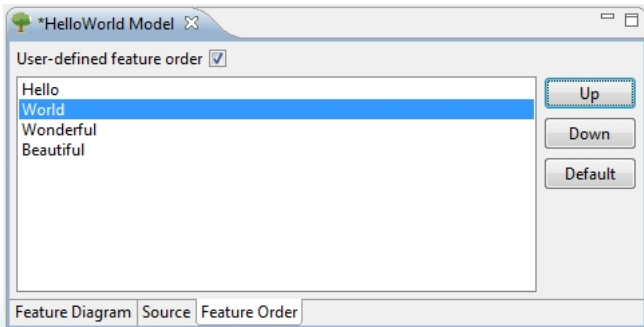
Feature Model Editor - Feature Diagram

- ▶ Legend for the feature model elements and colors
- ▶ Highlighting dead features
- ▶ Highlighting false optional features
- ▶ Highlight if the model is void



Feature Model Editor - Feature Order

- ▶ Order of features matters: can influence program behavior
- ▶ Default order: pre-order traversal of the feature diagram
- ▶ User-defined order possible
- ▶ Applies to all configurations



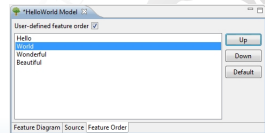
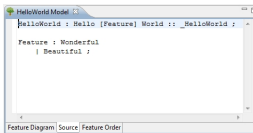
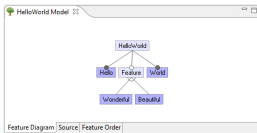
Feature Model Editor - Synchronization

Before saving:

- ▶ When switching tab, changes are propagated

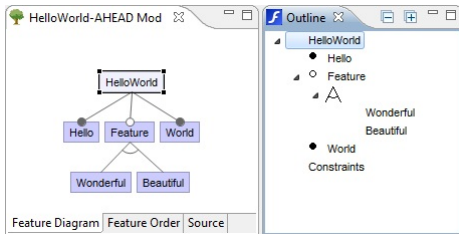
When saving:

- ▶ Feature folders are created, removed, and renamed
- ▶ Updating order of features in configurations
- ▶ Checking which configurations are valid/invalid
- ▶ Current content of Configuration Editor updated



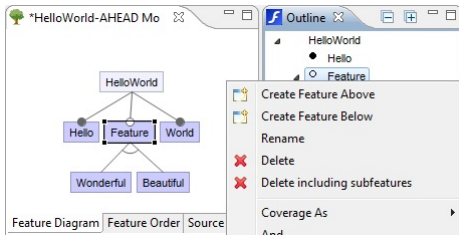
FeatureIDE Outline View: Feature Model

- ▶ Tree representation of the Feature Model



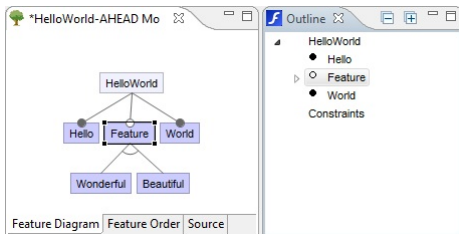
FeatureIDE Outline View: Feature Model

- ▶ Tree representation of the Feature Model
- ▶ Same context menu like at the editor



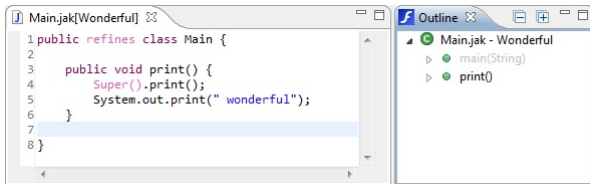
FeatureIDE Outline View: Feature Model

- ▶ Tree representation of the Feature Model
- ▶ Same context menu like at the editor
- ▶ Minimize subtrees for a better overview



FeatureIDE Collaboration Outline

- ▶ Additional to the normal outline, it contains all methods of this class from other features



The screenshot shows two windows from an IDE. The left window, titled 'Main.jak[Wonderful]', displays the following Java code:

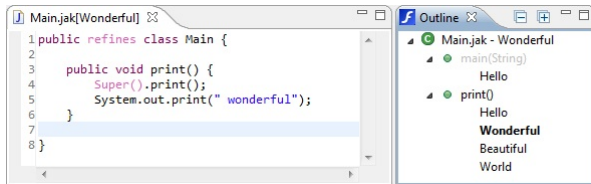
```
1 public refines class Main {
2
3     public void print() {
4         Super().print();
5         System.out.print(" wonderful");
6     }
7
8 }
```

The right window, titled 'Outline', shows a tree view of the class structure:

- Main.jak - Wonderful
 - main(String)
 - print()

FeatureIDE Collaboration Outline

- ▶ Additional to the normal outline, it contains all methods of this class from other features
- ▶ The subtree of a method contains all features implementing it



FeatureIDE Collaboration Outline

- ▶ Additional to the normal outline, it contains all methods of this class from other features
- ▶ The subtree of a method contains all features implementing it
- ▶ Clicking the feature will open the corresponding file



FeatureIDE Collaboration Outline: Contracts

The screenshot displays two windows from the FeatureIDE IDE. The left window, titled 'PayCard.java [PayCard]', shows the source code for the PayCard class. It includes class-level invariants, public fields with specifications, and two constructors. The right window, titled 'Collaboration Outline', shows a tree view of the class's structure, including fields, methods, and nested classes, with a green checkmark next to the class name.

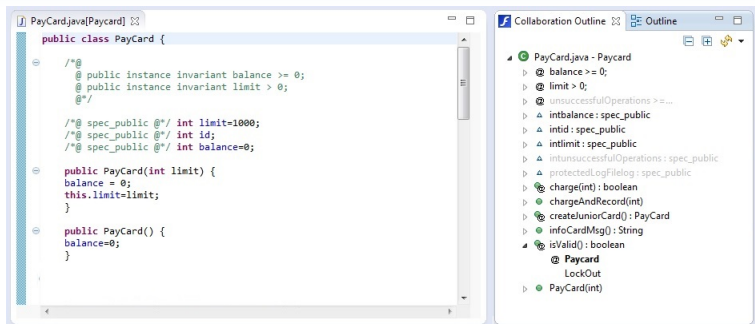
```
public class PayCard {  
    /*@  
    @ public instance invariant balance >= 0;  
    @ public instance invariant limit > 0;  
    @*/  
  
    /*@ spec_public @*/ int limit=1000;  
    /*@ spec_public @*/ int id;  
    /*@ spec_public @*/ int balance=0;  
  
    public PayCard(int limit) {  
        balance = 0;  
        this.limit=limit;  
    }  
  
    public PayCard() {  
        balance=0;  
    }  
}
```

Collaboration Outline:

- PayCard.java - Paycard
 - balance >= 0;
 - limit > 0;
 - unsuccessfulOperations >=...
 - intbalance : spec_public
 - intid : spec_public
 - intlimit : spec_public
 - intunsuccessfulOperations : spec_public
 - protectedLogFilelog : spec_public
 - charge(int) : boolean
 - chargeAndRecord(int)
 - createJuniorCard() : PayCard
 - infoCardMsg() : String
 - isValid() : boolean
 - Paycard
 - LockOut
 - PayCard(int)

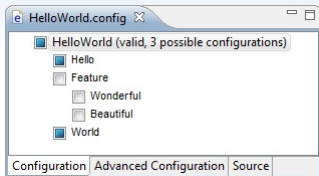
- ▶ Class invariants are shown in Outline above class fields

FeatureIDE Collaboration Outline: Contracts



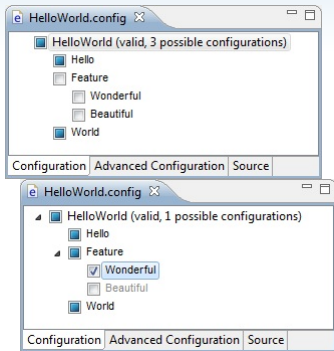
- ▶ Class invariants are shown in Outline above class fields
- ▶ Contracts of methods are displayed by decorating @-icon
- ▶ Features in subtrees of a method with additional @-icon if contract exists

Configuration Editor: Default Page



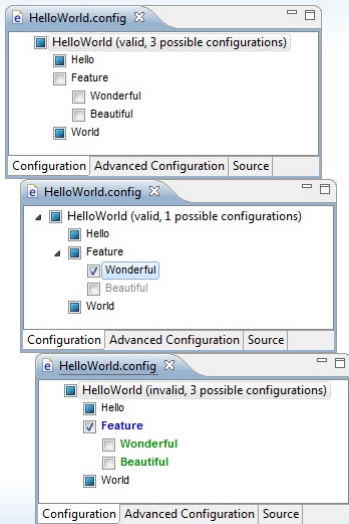
- ▶ Manual select or deselect the features
- ▶ Automatic decisions based on current manual decisions
- ▶ Is current configuration valid?
- ▶ Counting possible configurations
- ▶ Highlightings to find a valid configuration (blue: deselect, green: select the feature)

Configuration Editor: Default Page



- ▶ Manual select or deselect the features
- ▶ Automatic decisions based on current manual decisions
- ▶ Is current configuration valid?
- ▶ Counting possible configurations
- ▶ Highlightings to find a valid configuration (blue: deselect, green: select the feature)

Configuration Editor: Default Page



- ▶ Manual select or deselect the features
- ▶ Automatic decisions based on current manual decisions
- ▶ Is current configuration valid?
- ▶ Counting possible configurations
- ▶ Highlightings to find a valid configuration (blue: deselect, green: select the feature)

Configuration Editor: Advanced Page

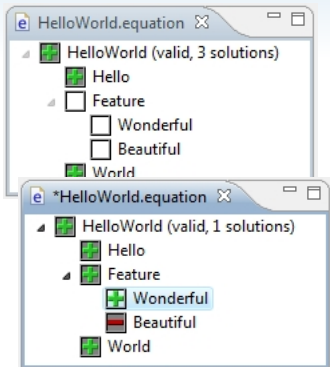


- ▶ Additional to the default page you can eliminate features

On save:

- ▶ Error marker if invalid
- ▶ Build process started if current configuration

Configuration Editor: Advanced Page

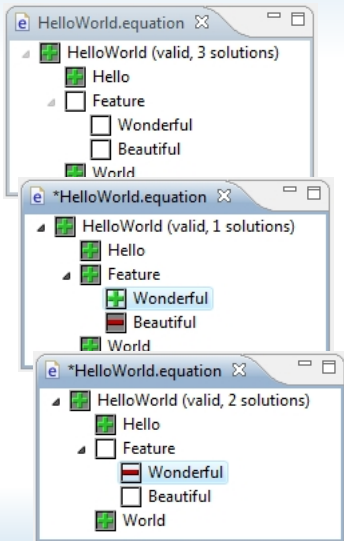


- ▶ Additional to the default page you can eliminate features

On save:

- ▶ Error marker if invalid
- ▶ Build process started if current configuration

Configuration Editor: Advanced Page

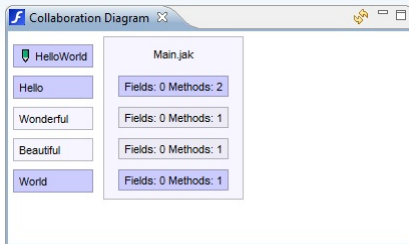


- ▶ Additional to the default page you can eliminate features

On save:

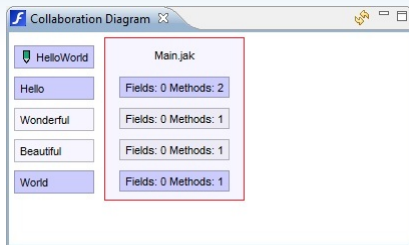
- ▶ Error marker if invalid
- ▶ Build process started if current configuration

Collaboration Diagram: Introduction



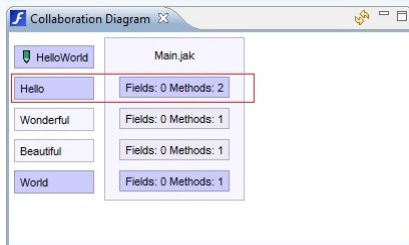
- ▶ Visualization of a software product line implementation

Collaboration Diagram: Introduction



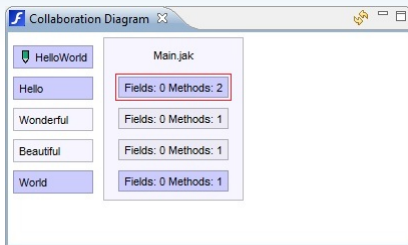
- ▶ Visualization of a software product line implementation
- ▶ Class - a composed class

Collaboration Diagram: Introduction



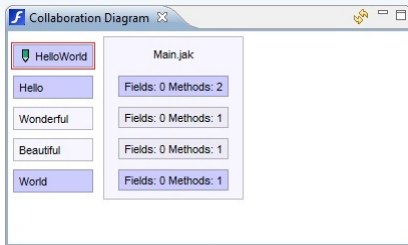
- ▶ Visualization of a software product line implementation
- ▶ Class - a composed class
- ▶ Collaboration - set of classes to implement a feature

Collaboration Diagram: Introduction



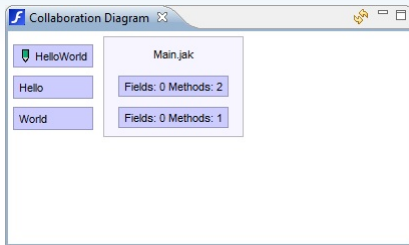
- ▶ Visualization of a software product line implementation
- ▶ Class - a composed class
- ▶ Collaboration - set of classes to implement a feature
- ▶ Role - a class fragment to implement a feature of a class
- ▶ A lower role will refine the functionality of an upper one

Collaboration Diagram: Introduction

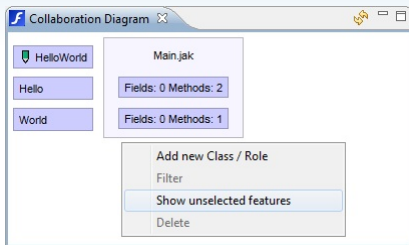


- ▶ Visualization of a software product line implementation
- ▶ Class - a composed class
- ▶ Collaboration - set of classes to implement a feature
- ▶ Role - a class fragment to implement a feature of a class
- ▶ A lower role will refine the functionality of an upper one
- ▶ Configuration - the corresponding configuration

Collaboration Diagram: Functionality

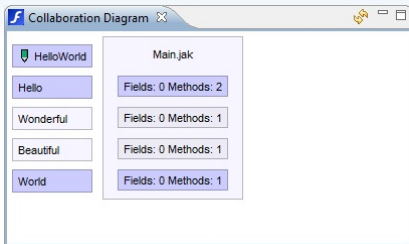


Collaboration Diagram: Functionality



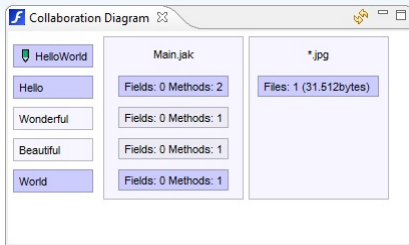
- ▶ Also showing unselected features

Collaboration Diagram: Functionality



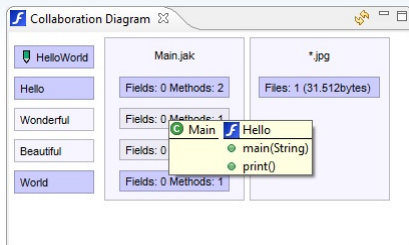
- ▶ Also showing unselected features

Collaboration Diagram: Functionality



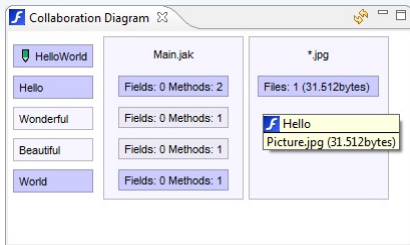
- ▶ Also showing unselected features
- ▶ Occurrence of arbitrary files

Collaboration Diagram: Functionality



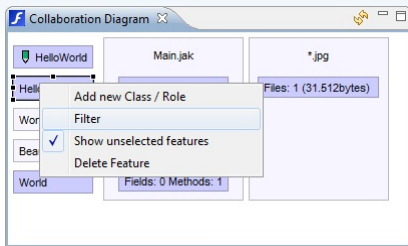
- ▶ Also showing unselected features
- ▶ Occurrence of arbitrary files
- ▶ Tooltip containing all methods and fields of the role

Collaboration Diagram: Functionality



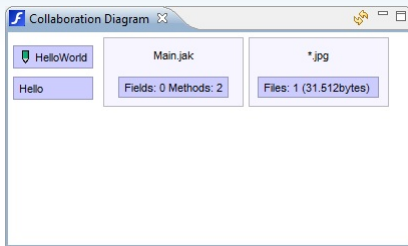
- ▶ Also showing unselected features
- ▶ Occurrence of arbitrary files
- ▶ Tooltip containing all methods and fields of the role
- ▶ Tooltip containing all arbitrary files of the same type

Collaboration Diagram: Functionality



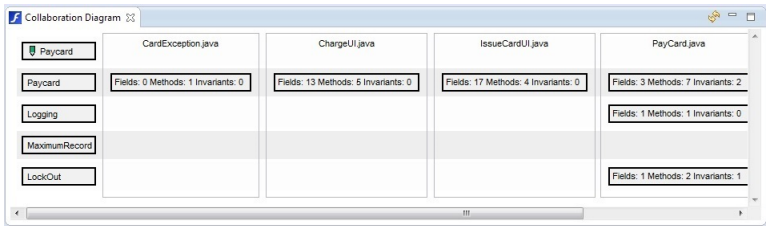
- ▶ Also showing unselected features
- ▶ Occurrence of arbitrary files
- ▶ Tooltip containing all methods and fields of the role
- ▶ Tooltip containing all arbitrary files of the same type
- ▶ Filter the diagram by a feature or class

Collaboration Diagram: Functionality



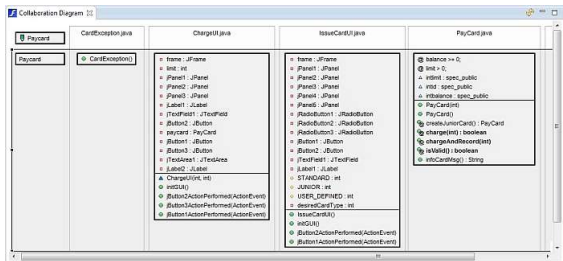
- ▶ Also showing unselected features
- ▶ Occurrence of arbitrary files
- ▶ Tooltip containing all methods and fields of the role
- ▶ Tooltip containing all arbitrary files of the same type
- ▶ Filter the diagram by a feature or class
- ▶ Open the role or class file by double clicking the box

Collaboration Diagram: Functionality



- ▶ Showing implementations details: Methods, Fields...

Collaboration Diagram: Functionality



- Showing implementations details: Methods, Fields...