



FAKULTÄT FÜR
INFORMATIK

FeatureIDE: Get Started

Thomas Thüm, Jens Meinicke

October 23, 2015

Installation of Eclipse

1. Download Eclipse: <http://www.eclipse.org/downloads/>
 - ▶ compatible with 3.4 (Ganymede) to 4.5 (Mars)

	JDT	CDT	Eclipse Sources
a) Java Developers	X		
b) CC Developers		X	
c) RCP and RAP Developers	X		X

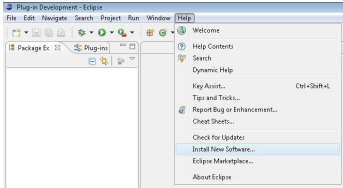
<http://www.eclipse.org/downloads/compare.php>

If you intend to ...

- a) work with Java/Jak and FeatureHouse/AHEAD (default)
 - b) work with C/C++ and FeatureHouse/FeatureC++
 - c) extend FeatureIDE (see extra slides)
2. Unzip Eclipse
 - ▶ Make sure that you have all permissions for the directory, i.e., do not use Windows' program files folder

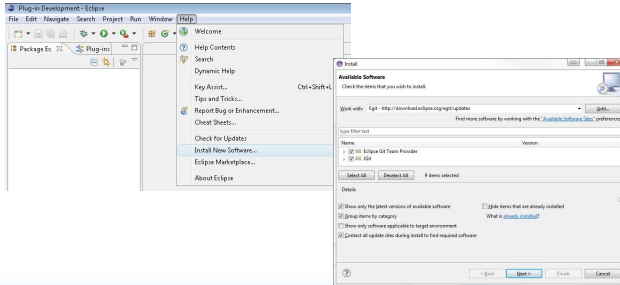
Preparing Eclipse

3. Start Eclipse and create a new workspace
4. Install CDT using Eclipse update mechanism (**only** if want to use the **FeatureC++** or **C/C++** and CDT is not installed)
<http://download.eclipse.org/tools/cdt/releases/8.8>



Preparing Eclipse

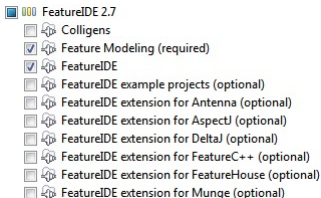
3. Start Eclipse and create a new workspace
4. Install CDT using Eclipse update mechanism (**only** if want to use the **FeatureC++** or **C/C++** and CDT is not installed)
<http://download.eclipse.org/tools/cdt/releases/8.8>



Installation of FeatureIDE

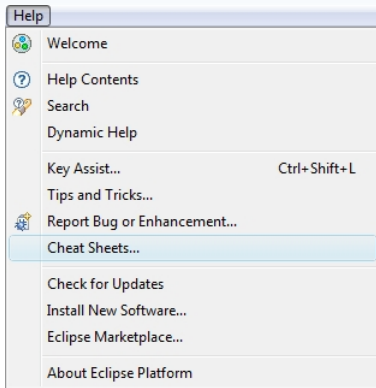
5. Install FeatureIDE

http://www.iti.cs.uni-magdeburg.de/iti_db/research/featureide/deploy/



- ▶ Feature Modeling is required by FeatureIDE
- ▶ FeatureIDE extensions are optional

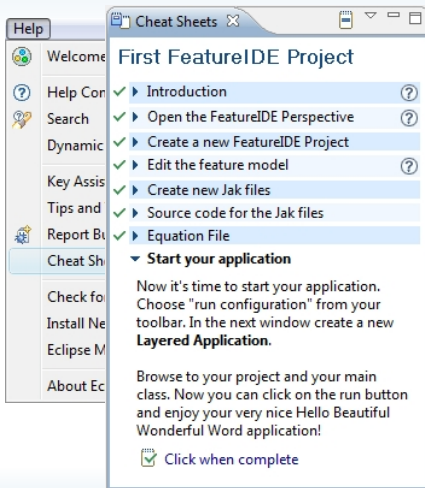
Cheat Sheet



- ▶ Step-by-step tutorial
- ▶ Create your first FeatureIDE project

1. Project creation
2. Editing the feature model
3. Create configurations
4. Write feature-oriented code
5. Run your application

Cheat Sheet



The screenshot shows the Eclipse IDE's Help window. The 'Help' menu is open, and the 'Cheat Sheet' option is selected. The 'Cheat Sheets' window displays the 'First FeatureIDE Project' cheat sheet. The content is as follows:

- Introduction
- Open the FeatureIDE Perspective
- Create a new FeatureIDE Project
- Edit the feature model
- Create new Jak files
- Source code for the Jak files
- Equation File
- Start your application**
 - Now it's time to start your application. Choose "run configuration" from your toolbar. In the next window create a new **Layered Application**.
 - Browse to your project and your main class. Now you can click on the run button and enjoy your very nice Hello Beautiful Wonderful Word application!

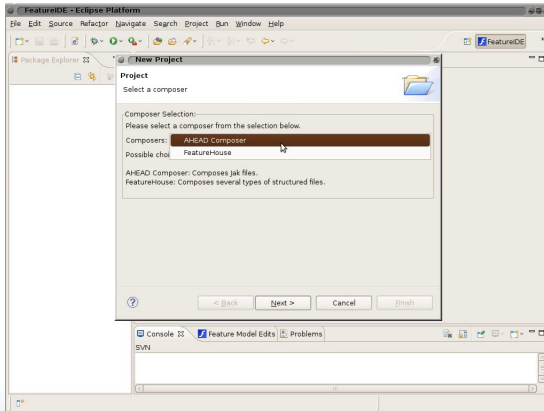
Click when complete

- ▶ Step-by-step tutorial
- ▶ Create your first FeatureIDE project

1. Project creation
2. Editing the feature model
3. Create configurations
4. Write feature-oriented code
5. Run your application

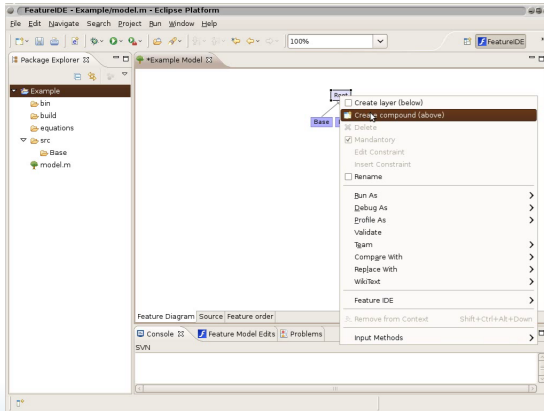
Webcast

http://wwwiti.cs.uni-magdeburg.de/iti_db/research/featureide/screenscasts/FeatureIDEv2.3.6.mpeg



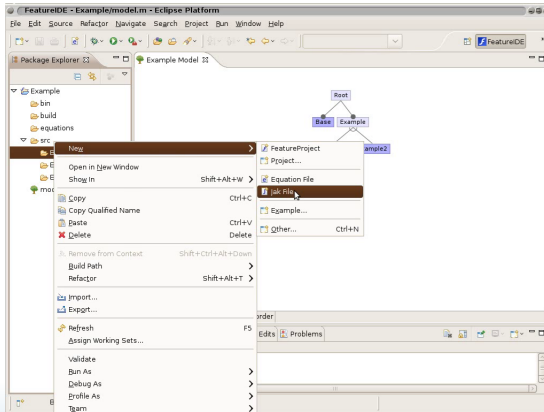
Webcast

http://wwwiti.cs.uni-magdeburg.de/iti_db/research/featureide/screencasts/FeatureIDEv2.3.6.mpeg



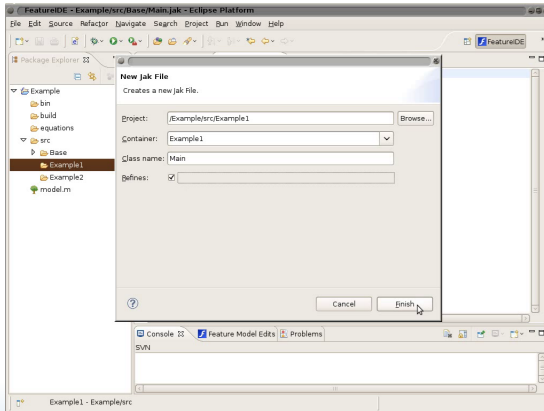
Webcast

http://wwwiti.cs.uni-magdeburg.de/iti_db/research/featureide/screenscasts/FeatureIDEv2.3.6.mpeg



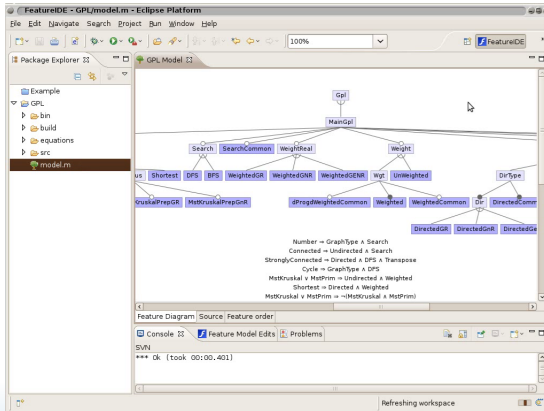
Webcast

http://wwwiti.cs.uni-magdeburg.de/iti_db/research/featureide/screencasts/FeatureIDEv2.3.6.mpeg



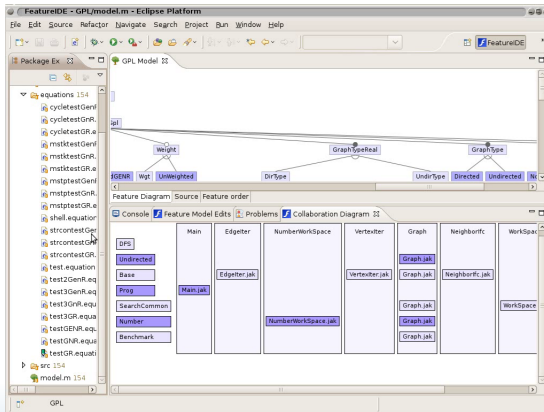
Webcast

http://wwwiti.cs.uni-magdeburg.de/iti_db/research/featureide/screenscasts/FeatureIDEv2.3.6.mpeg



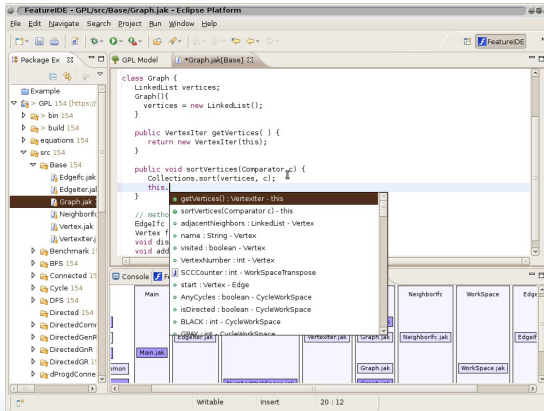
Webcast

http://wwwiti.cs.uni-magdeburg.de/iti_db/research/featureide/screenscasts/FeatureIDEv2.3.6.mpeg



Webcast

http://wwwiti.cs.uni-magdeburg.de/iti_db/research/featureide/screenscasts/FeatureIDEv2.3.6.mpeg



FeatureIDE Example Projects

- ▶ Example Wizard: New > Example > FeatureIDE

